



DESIGNER AND MANUFACTURER OF EQUIPMENTS  
FOR THE BUILDING AND MAINTENANCE OF GREEN SPACES



**PRODUCT CATALOGUE**



# ROTADAIRON®



## WHY CHOOSE ROTADAIRON ?

Like us, you appreciate the job well done. Our tools benefit from more than 65 years' experience and the constant desire to build a « perfect machine ». Whether it is our weeders, our soil preparers, our seeding machines, our overseeders, dethatcher-spiker or our mulchers, they have all been designed with the same objective: that you can have a quality tool for a long time. Carry out your projects day after day with a professional look. Be proud of your

## DESIGNER AND MANUFACTURER SINCE 1958

We have always made the choice to master in-house the design and manufacture of our products. All our employees are involved in the process of designing and finalizing new products. It is indeed the integration of the proposals of our welders, machinists, assemblers to the designs of our integrated design office that will allow us to provide you with the innovative and unique product you are looking for.

This product is of course at the beginning, the result of the feedback of the field experience acquired around the world with you, our customers. We guarantee quality customer service, high availability of spare parts thanks to a large stock and our internal manufacturing.

We know that it is this virtuous cycle that will allow us to keep customer goodwill.



# OUR COMMITMENTS

---



## CUSTOMER SATISFACTION

Your satisfaction is our priority, from equipment selection to day-to-day and long-term use



## ROBUST MACHINES

We have always made the choice to manufacture durable goods :  
« quality since 1958 »



## A FRENCH MANUFACTURE

We design AND manufacture in France and work with regional partners



## AN INCOMPARABLE RESULT

You are proud of what you have achieved with your equipment !



# Special applications

Page : 81



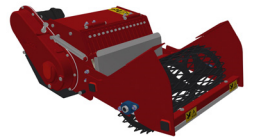
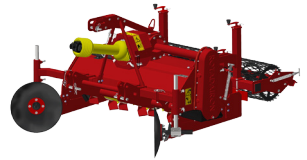
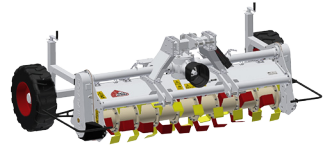
P.67



P.75



P.7





# WEEDING

---



P. 8



P. 10



P. 12



P. 14

# **STABNET PRIMO 55** ROTADAIRON®



**Cup-type cutting table patented**



**Finishing raking and harrowing**

# SELF-PROPELLED MECHANICAL WEEDERS

The StabNet PRIMO 55 is a simple, economical stand-alone mechanical weedkiller. The machine can be used for both curative and maintenance weeding. It works in BOTH forward and reverse gears and has a tilt function, making it highly productive.

It is fitted with rotating rollers to protect street furniture.

It can also be used for levelling, decompacting and reprofiling driveways.

The machine is available in a thermal or electric version (PRIMO 55 E).

## Technical details :

Machines	StabNet Primo 55	StabNet Primo 55 E
Working width	550 mm (21" 5/8)	
Weight	144 Kg (317.47 lb)	
Carrier power	5 CV (5 HP)	3470 W (4.7 HP)
Working depth (adjustable)	5 to 50 mm (0" 3/16 to 19" 3/4)	
Transmission	Mechanical	
Working capacity	Until 1500 m <sup>2</sup> /h (16145 sq/ft)	
Recommended forward speed	3 to 5 km/h (2 to 4 m/h)	
Number of cups	5	
Transport dimension l x L x H	600 mm x 1500 mm x 800 mm (23"5/8 x 59" 1/16 x 31" 1/2)	
Option	/	

Go pesticide-free with STABNET – our patented mechanical weed control solutions combine effectiveness with respect for the environment.



ZÉRO PHYTO

# STABNET 55/70/90P ROTADAIRON®



**StabNet 70P on Etesia H80**



**StabNet 55P on Koppl Light**

# MECHANICAL WEEDERS

The StabNet 55/70/90P are multi-purpose mechanical weeders that can be fitted to a wide range of carriers.

These machines can be used for maintenance or curative weed control at high output. They work BOTH forwards and backwards, and feature a tilt function, making them highly productive.

The machines can also be used for levelling, decompacting and reprofiling driveways. Optional stripping and finishing kits can be fitted to the rear of the carriers.

Les machines peuvent aussi être utilisées pour des opérations de nivelage, décapage, décompactage et de reprofilage des allées.

Des kits de défeutrages et de finitions (options) se fixent to l'arrière des portes outils.

## Technical details :

Machines	StabNet 55P	StabNet 70P	StabNet 90P
Coupling head	Köppl easy and light, Kersten, Grillo,...*	Rapid Mondo, Etesia H80, Kersten, Agria 3600, Universo, Tuchel-Nibbi...*	Rapid Mondo, Etesia, Staub...*
Working width	550 mm (21" 5/8)	700 mm (27" 9/16)	900 mm (35" 7/16)
Weight	74 Kg (163 lb)	88 Kg (194 lb)	100 Kg (220 lb)
Carrier : required power	5 CV (5 HP)	7 CV (7 HP)	9 CV (9 HP)
Working depth (adjustable)	5 to 50 mm (0" 3/16 to 19" 3/4)		
Inclination	Yes		
Number of cups	5	5	7
Transport dimension l x L x H	550 mm x 850 mm x 800 mm (21" 5/8 x 33" 1/2 x 31" 1/2)	750 mm x 850 mm x 800 mm (29" 1/2 x 33" 1/2 x 31" 1/2)	950 mm x 850 mm x 800 mm (37" 3/8 x 33" 1/2 x 31" 1/2)
<b>Options</b>	- Finishing kit (claws and harrows) - Edge trimmer**		

\*Other models, contact us

\*\* Not available on 90P

Go pesticide-free with STABNET – our patented mechanical weed control solutions combine effectiveness with respect for the environment.



ZÉRO PHYTO

# STABNET 100L ROTADAIRON®



**Rake, harrow and grid for clod crumbling**



**Option : 100L transport skip**

# TRAILED/TRACTOR MOUNTED MECHANICAL WEEDERS

The StabNet 100L is a simple, economical trailed/tractor mounted mechanical weeder for lawn tractors, quad bikes, micro tractors, etc.

The machine can be used for effective curative or maintenance weeding.

It can also be used for levelling, decompacting and reprofiling driveways. Its optional skip can be used to transport materials.

## Technical details :

Machines	StabNet 100L
Working width	1000 mm (39" <sup>3</sup> / <sub>8</sub> )
Weight	66 Kg (145.50 lb)
Tractor : Required power	10CV (10HP)
Working depth (adjustable)	5 to 50 mm (0" <sup>3</sup> / <sub>16</sub> to 19" <sup>3</sup> / <sub>4</sub> )
3 point hitch (removable)	Tiller and 3-point mode
Working capacity	Until 2500 m <sup>2</sup> /h (26 909 sq/ft)
Recommended forward speed	8 to 10 km/h (5 to 6 m/h)
Number of cups	5
Rangée de fléaux	2
Transport dimension l x L x H	1400 mm x 1000 mm x 600mm (55' <sup>1</sup> / <sub>8</sub> x 39" <sup>3</sup> / <sub>8</sub> x 23" <sup>5</sup> / <sub>8</sub> )
<b>Options</b>	<ul style="list-style-type: none"><li>- 100L transport skip</li><li>- Claw finishing kit for raking and harrowing</li><li>- Grid for crumbling clods and levelling</li><li>- Edge trimmer</li></ul>

Go pesticide-free with STABNET – our patented mechanical weed control solutions combine effectiveness with respect for the environment.



# STABNET 90/120/160T ROTADAIRON®



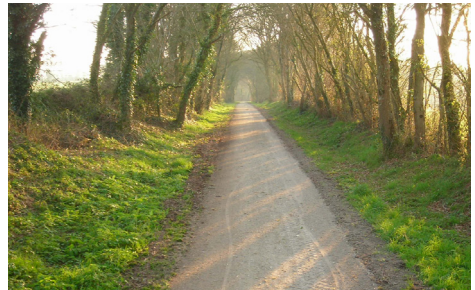
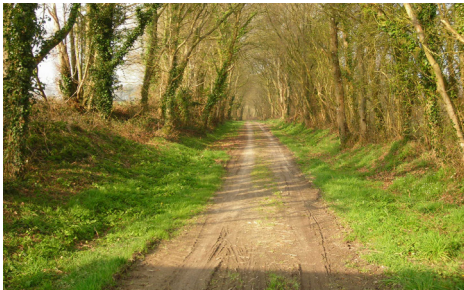
Rake, harrow and rear roller  
for a smooth finish



Option : edge trimming with  
sharpened disc

# TRACTOR-MOUNTED MECHANICAL WEEDERS

The StabNet 90T, 120T, and 160T are multifunctional mechanical weeders. The machines can be used for high-efficiency maintenance or curative weeding. They operate in both forward AND reverse, and feature a tilting function that makes them highly productive. The machines can also be used for leveling, stripping, decompacting, and reprofiling paths.



**Before**

**After**

# TRACTOR-MOUNTED MECHANICAL WEEDERS

## Détails techniques :

Machines	StabNet 90T	StabNet 120T	StabNet 160T
Working width	900 mm (34" 7/5)	1200 mm (47" 7/32)	1600 mm (62" 15/16)
Weight	280 Kg (617.29 lb)	516 Kg (1137.6 lb)	620 Kg (1366.9 lb)
Tractor : Required power	20 CV (20 HP)	30 CV (30 HP)	45 CV (45 HP)
Maximum lateral offset	250 mm (9"7/8)	300 mm (11"13/16)	350 mm (13" 3/4)
Working depth (adjustable)	5 to 50 mm (0" 3/16 to 19" 3/4)	5 to 50 mm (0" 3/16 to 19" 3/4)	5 to 50 mm (0" 3/16 to 19" 3/4)
3 point hitch (removable)	Categories 1 & 2		
Working capacity	Until 8 000 m <sup>2</sup> /h (86111 sq/ft)	Until 10 000 m <sup>2</sup> /h (107 639 sq/ft)	Until 12 000 m <sup>2</sup> /h (129 166 sq/ft)
Recommended forward speed	8 to 10 km/h (5 to 6 m/h)		
Number of cups	9	11	15
Row of flails	1	2	2
Transport dimension l x L x H	1000 mm x 1800 mm x 1000 mm (39" 3/8 x 70' 7/8 x 39" 3/8)	1300 mm x 1900 mm x 1500mm (51" 3/16 x 74' 13/16 x 59" 1/16)	1650 mm x 1900 mm x 1500mm (65" 1/32 x 74' 13/16 x 59" 1/16)
Option	- Edge trimmer with sharpened disc		

Go pesticide-free with STABNET – our patented mechanical weed control solutions combine effectiveness with respect for the environment.



# RAKING

---

P. 18



***DYNARAKE***

# DYNARAKE ROTADAIRON®



**Retractable wheels (SW)**



**Orientable rotor (SW)**

# LEVELLING RAKE FOR SKID-STEERS

After TurfRenov, ROTADAIRON introduces a new tool to optimize old grass renovation in «ZERO PHYTO»

Use the DynARAKE to strip the old turf and its collar to a reduced thickness.

Use the DynARAKE to remove debris and shape your ground before using the ROTADAIRON soil preparer.

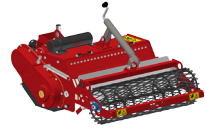
The machine can also be used for levelling operations, decompacting and reprofiling driveways.

## Technical details :

Machine	DynaRAKE 50	DynaRAKE 50 B	DynaRAKE 50 Swing (SW)	DynaRAKE 50 B Swing (SW)
Hitch plate	Toro / Ditch Witch / Vermeer	Bobcat MT	Toro / Ditch Witch / Vermeer	Bobcat
Working width	1250 mm (49" 2/5)			
Total width	1495 mm (58" 4/5)			
Weight	230 Kg (507 lb)	245 Kg (540 lb)	245 Kg (540 lb)	280 Kg (617 lb)
Carrier : Hydraulic flow	40 to 65 l/min (10.5 to 15.8 US gpm)			
Carrier : Pressure	210 Bars (2900 psi)			
Carrier : Maximum track	1.25 meters (49" 2/5)			
Number of picks	Replaceable carbide tips			
Forward speed	0.8 to 1.5 Km / h (0.5 to 0.9 mph)			
Transmission	Hydraulic motor + oil bath chain			
Security	Carrier hydraulics			
Dimensions of transport l x L x H	1495 mm x 1120 mm x 670 mm (58" 4/5 x 44" 1/10 x 26" 1/2)			
Orientable rotor	No	No	Yes	Yes
Retractable wheels	No	No	Yes	Yes
Adjustable end plates	No	No	Yes	Yes



# SOIL PREPARATION



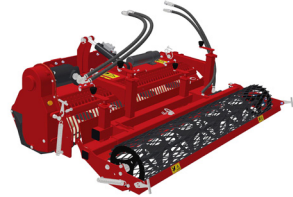
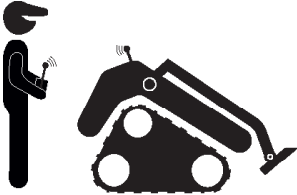
P. 22



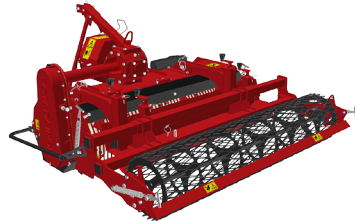
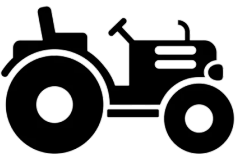
P. 24



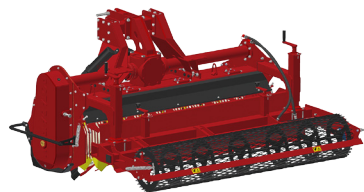
P. 26



P. 30

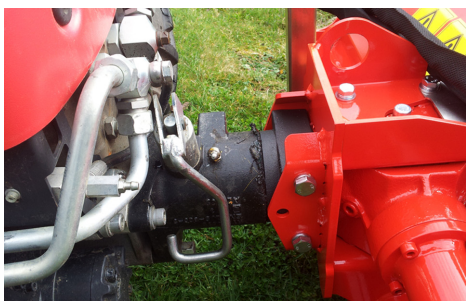


P. 32



P. 36

# STM 75 ROTADAIRON®



**RAPID hitch**



**Option : Working depth setting by hydraulic jack**

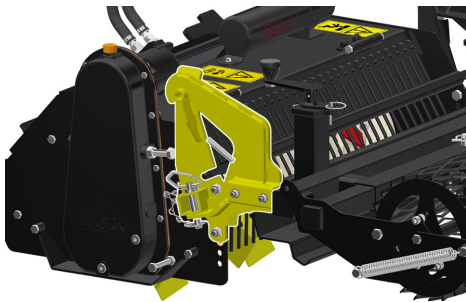
# STONE BURIERS FOR TILLERS

This soil preparer and stone burier is thought for cultivators. This machine has been designed to perform tilling to 140 mm, burying pebbles/litter/grass, levelling with adjustable levelling blade, rolling with metal mesh roller. The use is made in direct or on a ground previously decompacted in depth and cleared of large stones.

## Technical details :

Machine	STM 75	
Coupling head	RAPID/REFORM, NIBBI, AGRIA*, AEBI (Other brands, contact us) *AGRIA adaptor not supplied	
Working width	750 mm (29" 1/2)	
Total width	960 mm (37" 3/4)	
Weight	STM 75 RAPID/REFORM : 167 Kg (368 lb)	STM 75 NIBBI : 160 Kg (352.7 lb)
	STM 75 AGRIA : 159 Kg (350.5 lb)	STM 75 AEBI : 155 Kg (341.7 lb)
Tiller : max track width	0.98 meter (38" 1/2)	
Working depth (max)	140 mm (5" 1/2)	
Rotor outer diameter	400 mm (15" 3/4)	
Depth adjustment	Screw jack system	
Number of blades	16	
Grid finger spacing	22 mm (7/8")	
PTO speed	920 tr/min (clockwise) for RAPID/REFORME, NIBBI, AGRIA, AEBI	
Forward speed	0.8 to 1.5 Km/h (0.5 to 0.9 mph)	
Transmission	Angle gearbox + oil bath chain	
Security	Oil bath torque limiter at the end of the rotor	
Transport dimension w x L x H	960 mm x 1215 mm x 590 mm (37" 3/4 x 47" 3/4 x 23" 1/4)	
Option	- Working depth setting by hydraulic jack	

# STH 30/36/42 ROTADAIRON®



Option : Fast coupling / uncoupling device



Option : SG Gravity grass seeder  
(See SG P.56)

# STONE BURIERS FOR SKID-STEERS

These soil and stone buriers are designed for Skid-Steer (mini-loader). There are three versions of the machine hitch:

- Toro / Ditch Witch / Vermeer type hitch plate : STH 36 / STH 42

- Bobcat type hitch plate : STH 36 B / STH 42 B

- Adaptable to your carrier by your own : supplied without hitch plate, without hoses, without couplers : STH 36 / 42 ADAPT

It allows the building or renovation of green spaces by preparing the seed bed before seeding. The machine is multi-purpose, it allows tilling, burying (stones, rubbish, herbs, etc.), levelling, mixing and rolling the surface. The use is done live or on a ground previously decompacted in depth and cleared of large stones.

## Technical details :

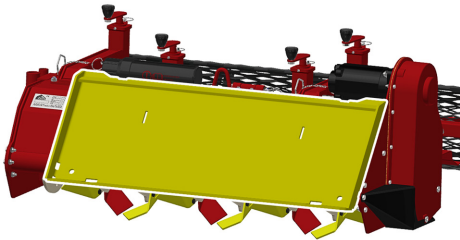
Machines	STH 30	STH 36		STH 42	
Model	STH 30	STH 36	STH 36 B	STH 42	STH 42 B
Hitch plate	Toro / Ditch Witch / Vermeer	Toro / Ditch Witch / Vermeer	Bobcat MT	Toro / Ditch Witch / Vermeer	Bobcat MT
	For specific request, please contact us				
Working width	750 mm (29" 1/2)	963 mm (38")		1100 mm (43" 1/4)	
Total width	930 mm (36" 5/8)	1330 mm (52" 1/4)		1440 mm (56" 3/4)	
Weight	180 Kg (396.8 lb)	265 Kg (584.2 lb)	280 Kg (650.3 lb)	285 Kg (628.3 lb)	305 Kg (672.4 lb)
Carrier : Hydraulic flow	30 to 45 l/min (7,9 to 11,8 US gpm)			40 to 55 l/min (10,5 to 14,5 US gpm)	
Carrier : Pressure	200 to 250 Bars (2900 to 3625 psi)				
Carrier : Maximum track width	0.96 meters (37" 3/4)	1.15 meters (45" 1/4)	1 meter (39" 1/3)	1.30 meters (51" 1/4)	1.15 meters (45" 1/4)
Working depth (max)	140 mm (5" 1/2)				
Rotor outer diameter	400 mm (15" 3/4)				
Depth adjustment	Rear roller height adjustable 4 positions				
Number of blades	16	20		24	
Grid finger spacing	22 mm (7/8")				
Forward speed of the carrier	0.8 to 1,5 Km/h (0.5 to 0.9 mph)				
Transmission	Hydraulic motor + chain in oil bath				
Security	Made by the carrier				
Transport dimension w x L x H	930 mm x 1100 mm x 600 mm (36" 5/8 x 60" 3/4 x 23" 5/8)	1325mm x 1545mm x 620mm (52"1/4 x 60"3/4 x 24"1/2)		1440mm x 1545mm x 620mm (56"3/4 x 60"3/4 x 24"1/2)	

## Options

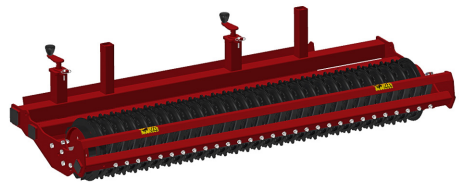
/

- Fast coupling / uncoupling device
- Rear mesh roller side adjustment device by cylinder  
(Requires auxiliary hydraulic line)
- Gravity Grass Seeder : SG 90 for STH 36 / SG 100 for STH 42
- Spiral roller

# **RDH 52/60** ROTADAIRON®



**Conventional quick hook system**



**Option : Cast iron roller disc chassis**

# STONE BURIERS FOR HYDRAULIC LOADERS

These soil preparers and stone buriers are intended for hydraulic loaders. There are two versions of the machine hitch:

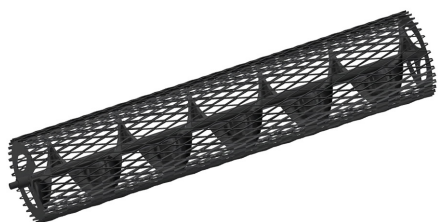
- Bobcat type hitch plate : RDH 60
- Adaptable to your carrier by your own : supplied without hitch plate, without hoses, without couplers : RDH 60 ADAPT

It allows the building or renovation of green spaces by preparing the seed bed before seeding. The machine is multi-purpose, it allows tilling, burying (stones, rubbish, herbs, etc.), levelling, mixing and rolling the surface. The use is made in direct or on a ground previously decompacted in depth and cleared of large stones.

## Technical details :

Machines	RDH 60	
Model	RDH 60	RDH 60 ADAPT
Hitch plate	Bobcat	Without hitch plate, without hoses, without coupler
	For specific request, please contact us	
Working width	1500 mm (59")	
Total width	1830 mm (72")	
Weight	500 Kg (1102,3 lb)	465 Kg (1025,1 lb)
Carrier : Hydraulic flow	70 to 120 l/min (18,5 to 31,7 US gpm)	
Carrier : Pressure	210 to 300 Bars (3045 to 4350 psi)	
Carrier : Maximum track width	1,8 meters (70" 4/5)	-
Working depth (max)	140 mm (5" 1/2)	
Rotor outer diameter	Ø 400 mm (15" 3/4)	
Depth adjustment	Support on rear roller adjustable by screw jacks	
Number of blades	32	
Grid finger spacing	20 mm (4/5")	
Forward speed of the carrier	0.8 to 1.5 Km/h (0.5 to 0.9 mph)	
Transmission	Hydraulic motor + chain in oil bath	
Security	Made by the carrier	
Transport dimension w x L x H	1905 mm x 1570 mm x 700 mm (75" x 61" 3/4 x 27" 1/2)	
<b>Options</b>	<ul style="list-style-type: none"> <li>- Cast-iron notched discs roller frame</li> <li>- Rear mesh roller side adjustment device by cylinder (Requires auxiliary hydraulic line)</li> <li>- Spiral roller</li> </ul>	

# **RDH 70** ROTADAIRON®



**Option : Spiral roller**



**Option : Roller side adjustment device by cylinder**

# STONE BURIER FOR HYDRAULIC LOADERS

This soil preparer and stone burier is intended for hydraulic loaders with Bobcat hitch plate.

It allows the building or renovation of green spaces by preparing the seed bed before seeding. The machine is multi-purpose, it allows tilling, burying (stones, rubbish, herbs, etc.), levelling, mixing and rolling the surface. The use is made in direct or on a ground previously decompacted in depth and cleared of large stones.

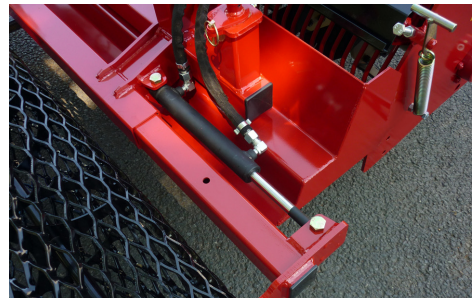
## Technical details :

Machines	RDH 70
Hitch plate	Bobcat
Working width	1774 mm (69" <sup>3</sup> / <sub>4</sub> )
Total width	2130 mm (84")
Weight	780 Kg (1719.6 lb)
Carrier : Hydraulic flow	70 to 120 l/min (18,5 to 31,7 US gpm)
Carrier : Pressure	210 to 300 Bars (3045 to 4350 psi)
Carrier : Maximum track width	2,15 meters (84" <sup>2</sup> / <sub>3</sub> )
Working depth (max)	160 mm (6" <sup>1</sup> / <sub>4</sub> )
Rotor outer diameter	Ø 510 mm (20")
Depth adjustment	Support on rear roller adjustable by screw jacks
Number of blades	54
Grid finger spacing	20 mm (4/5")
Forward speed of the carrier	0.8 to 1.5 Km/h (0.5 to 0.9 mph)
Transmission	Hydraulic motor + chain in oil bath
Security	Made by the carrier
Transport dimension w x L x H	2140 mm x 1900 mm x 850 mm (84" <sup>1</sup> / <sub>4</sub> x 74" <sup>3</sup> / <sub>4</sub> x 33" <sup>1</sup> / <sub>2</sub> )
Options	- Spiral roller - Roller side adjustment device by cylinder (Requires auxiliary hydraulic line)

# **RCH 60** ROTADAIRON®



**MDB type hitch plate**



**Option : Hydraulic movement of the mesh metal roller frame**

# STONE BURIERS FOR REMOTE CONTROLLED TOOL CARRIERS

These soil preparers and stone burier are intended for remote controlled tool carrier. There are two versions of the machine hitch :

- MDB type hitch plate : RCH 60 MDB
- Adaptable to your carrier by your own : supplied without hitch plate, without hoses, without couplers : RCH 60 ADAPT

It allows the building or renovation of green spaces by preparing the seed bed before seeding. The machine is multi-purpose, it allows tilling, burying (stones, rubbish, herbs, etc.), levelling, mixing and rolling the surface. The use is done live or on a ground previously decompacted in depth and cleared of large stones.

## Technical details :

Machine	RCH 60	
Model	RCH 60 MDB	RCH 60 ADAPT
Hitch plate	MDB type hitch plate	Without hitch plate, without hoses, without coupler
	For specific request, please contact us	
Working width	1500 mm (59")	
Total width	1830 mm (72")	
Weight	460 Kg (1014 lb)	465 Kg (1025,1 lb)
Carrier : Hydraulic flow	70 to 120 l/min (18,5 to 31,7 US gpm)	
Carrier : Pressure	210 to 300 Bars (3045 to 4350 psi)	
Carrier : Maximum track width	1,8 meters (70" 4/5)	-
Working depth (max)	140 mm (5" 1/2)	
Rotor outer diameter	Ø 400 mm (15" 3/4)	
Depth adjustment	Support on rear roller adjustable by screw jacks	
Number of blades	32	
Grid finger spacing	20 mm (4/5")	
Couplers	MDB Faster motor supply coupler not supplied Hydraulic 3-point couplers : 3/8"	-
Forward speed of the carrier	0.8 to 1.5 Km/h (0.5 to 0.9 mph)	
Transmission	Hydraulic motor + chain in oil bath	
Security	Made by the carrier	
Transport dimension w x L x H	1905 mm x 1605 mm x 700 mm (75" x 63" 1/4 x 27" 1/2)	
<b>Option</b>	- Rear mesh roller side adjustment device by cylinder (Requires auxiliary hydraulic line) - Spiral roller	

# STONY 75/90/115 ROTADAIRON®



**Option : Hydraulic movement of the mesh metal roller frame**



**Option : Stainless Steel Gravity Grass Seeder SG on Stony 90 and Stony 115 (See SG P.56)**

# STONE BURIERS FOR MICRO-TRACTORS

These soil preparers and stone buriers are designed for micro-tractors. It allows the building or renovation of green spaces by preparing the seed bed before seeding. The machine is multi-purpose, it allows tilling, burying (stones, rubbish, herbs, etc.), levelling, mixing and rolling the surface. The use is done live or on a ground previously decompacted in depth and cleared of large stones.

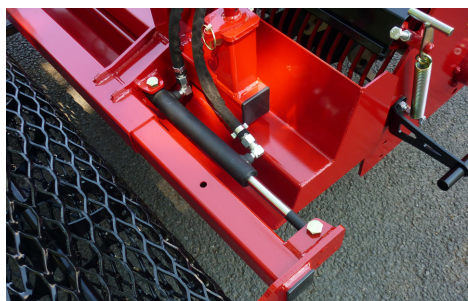
## Technical details :

Machines	Stony 75	Stony 90	Stony 115
Working width	750 mm (29" 1/2)	963 mm (38")	1100 mm (43" 1/4)
Total width	1210 mm (47" 3/4)	1382 mm (54" 1/2)	1520 mm (59" 3/4)
Weight	265 Kg (584.2 lb)	285 Kg (628.3 lb)	340 Kg (749.5 lb)
Tractor : Required power	15 - 18 CV	18 - 25 CV	20 - 25 CV
Tractor : Max track width	0.92 meter (36" 1/5)	1.05 meters (41" 1/3)	1.33 meters (40" 2/3)
Working depth (max)	140 mm (5" 1/2)		
Rotor outer diameter	400 mm (15" 3/4)		
Depth adjustment	Rear roller height adjustable 4 positions		
Number of blades	16	20	24
Grid finger spacing	22 mm (7/8")		
3 point hitch	Categories 1 & 2		
PTO speed	540 tr/min		
Tractor forward speed	0.8 to 1,5 Km/h (0.5 to 0.9 mph)		
Transmission	Angle gearbox + Oil bath chain		
Security	Oil bath torque limiter at the end of the rotor		
Transport dimension w x L x H	1210mm x 1450mm x 820mm (47" 3/4 x 57" x 32" 1/4)	1382mm x 1560mm x 830mm (54" 1/2 x 61" 1/2 x 32" 3/4)	1520mm x 1625mm x 845mm (59" 3/4 x 64" x 33" 1/4)

## Options

- Stainless Steel Splice Seeder :  
SG 90 for Stony 90 ; SG 100 for Stony 115
- Rear mesh roller side adjustment device by cylinder for  
the Stony 90 & Stony 115
- Spiral roller : for Stony 90 & Stony 115  
- Spiral roller

# RD 100/130/145 ROTADAIRON®



**Option : Hydraulic movement of the mesh metal roller frame**




**Option : Ventilated spline-slit seeder SCV (See P.56)**

# STONE BURIERS FOR MICRO-TRACTORS

These soils preparer and stone buriers are designed for tractors. It allows the building or renovation of green spaces by preparing the seed bed before seeding. The machine is multi-purpose, it allows tilling, burying (stones, rubbish, herbs, etc.), levelling, mixing and rolling the surface. The use is done live or on a ground previously decompacted in depth.

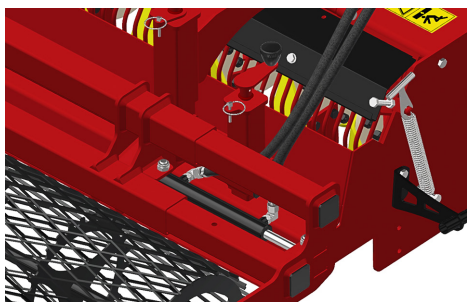
## Technical details :

Machines	RD 100	RD 130	RD 145
Working width	1100 mm (43" 1/4)	1338 mm (52" 3/4)	1500 mm (59")
Total width	1610 mm (63" 1/2)	1840 mm (72" 1/2)	2005 mm (79")
Weight with mesh metal roller	405 Kg (892.8 lb)	450 Kg (992 lb)	515 Kg (1135.3 lb)
Tractor : required power	22 - 35 CV	25 - 45 CV	30 - 50 CV
Tractor : max track width	1.34 meters (52" 3/4)	1.62 meters (63" 3/4)	1.54 meters (60" 5/8)
Working depth (max)	140 mm (5" 1/2)		
Rotor outer diameter	400 mm (15" 3/4)		
Depth adjustment	Support on rear roller adjustable by screw jacks		
Number of blades	36	42	48
Grid finger spacing	20 mm (4/5")		
3 point hitch	Categories 1 & 2		
PTO speed	540 tr/min		
Tractor forward speed	0.8 to 1.5 Km/h (0.5 to 0.9 mph)		
Transmission	Angle gearbox + Oil bath chain		
Security	Oil bath torque limiter at the end of the rotor		
Transport dimension w x L x H	1520mm x 1570mm x 995mm (59" 3/4 x 61" 3/4 x 39" 1/4)	1760mm x 1570mm x 995mm (69" 1/4 x 61" 3/4 x 39" 1/4)	1920mm x 1570mm x 1065mm (75" 1/2 x 61" 3/4 x 42")
Weight with cast iron notched disc roller		525 kg (1157.4 lb)	615 Kg (1355.8 lb)

## Options

- Rear mesh roller side adjustment device by cylinder
- Cast-iron notched discs roller frame (RD 130 / RD 145)
- Ventilated spline-slit seeder:
  - SCV 100 / SCV 130 / SCV 145
  - Spiral roller

# RDL 150/180/200/250



Option : Hydraulic movement of the mesh metal roller frame (standard with cast-iron roller)



Option : Ventilated spline-slit seeder SCV (See P.56)

# STONE BURIERS FOR TRACTORS

These soils preparer and stone buriers are designed for tractors. It allows the building or renovation of green spaces by preparing the seed bed before seeding. The machine is multi-purpose, it allows tilling, burying (stones, rubbish, herbs, etc.), levelling, mixing and rolling the surface. The use is done live or on a ground previously decompacted in depth.

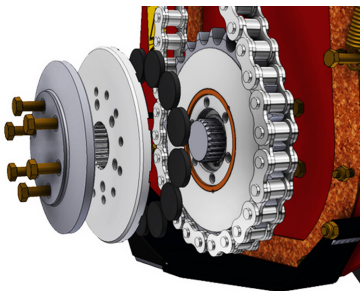
## Technical details :

Machines	RDL 150	RDL 180	RDL 200	RDL 250
Working width	1500 mm (59")	1774 mm (69"3/4)	1984 mm (78")	2492 mm (98")
Total width	1950 mm (76"3/4)	2240 mm (88"1/4)	2475 mm (97"1/2)	2944 mm (116")
Weight with mesh metal roller	798 Kg (1759.2 lb)	915 Kg (2017.2 lb)	965 Kg (2127.4 lb)	1134 Kg (2500 lb)
Tractor : Required power	45 - 60 CV	50 - 70 CV	55 - 80 CV	70 - 90 CV
Tractor : Max track width	1.80 meters (71")	1.84 meters (72" 1/2)	1.91 meters (75" 1/5)	2.35 meters (92" 1/2)
Working depth (max)	160 mm (6" 1/4)			
Rotor outer diameter	510 mm (20")			
Depth adjustment	Support on rear roller adjustable by screw jacks			
Number of blades	48	54	60	72
Grid finger spacing	20 mm (4/5")			
3 point hitch	Categories 1 & 2			
PTO speed	540 tr/min			
Tractor forward speed	0,8 to 1,5 Km/h (0.5 to 0.9 mph)			
Transmission	Angle gearbox + Oil bath chain			
Security	Torque limiter with dry friction and flywheel			
Transport dimension				
w	1930mm (76")	2190mm (86"1/4)	2410mm (95")	2920mm (115")
L	1880mm (74")	1920mm (75"1/2)	1890mm (74" 1/2)	1890mm (74" 1/2)
H	1120mm (44")	1120mm (44")	1120mm (44")	1120mm (44")
Weight with cast iron notched disc roller	955 Kg (2105.4 lb)	1120 Kg (2469.1 lb)	1198 Kg (2641.1 lb)	1421 Kg (3132.7 lb)

## Options

- Rear mesh roller side adjustment device by cylinder
- Cast iron grooved disc roller + Scraper (with hydraulic movement as standard)
- Ventilated spline-slit seeder:  
SCV 150 / SCV 180 / SCV 200 / SCV 250
- Spiral roller

# **RX 200** ROTADAIRON®



**Oil bath torque limiter  
at the end of the rotor**



**Anti-pad blades  
(Rotadairon® patent)**

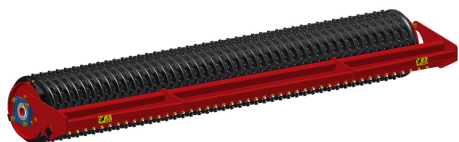
# STONE BURIERS FOR TRACTORS

This soil preparer and stone burier is designed for tractors. It allows the building or renovation of green spaces by preparing the seed bed before seeding. The machine is multi-purpose, it allows tilling, burying (stones, rubbish, herbs, etc.), levelling, mixing and rolling the surface. The use is done live or on a ground previously decompacted in depth.

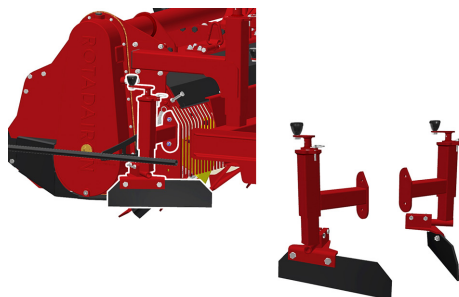
## Technical details :

Machine	RX 200
Working width	2042 mm (80'' 1/2)
Total width	2470 mm (97'' 1/4)
Weight with mesh metal roller	1622 Kg (3575.8 lb)
Tractor : Required power	80 - 100 CV
Tractor : Max track width	2 meters (78'' 3/4)
Working depth (max)	200 mm (8'')
Rotor outer diameter	630 mm (24'' 3/4)
Depth adjustment	Support on rear roller adjustable by screw jacks
Number of blades	60
Grid finger spacing	20 mm ( 4/5'')
3 point hitch	Categorie 2
PTO speed	1000 tr/min
Tractor forward speed	0,8 to 1,5 km/h (0.5 to 0.9 mph)
Transmission	Angle gearbox + Oil bath chain
Machine drive type	Single drive
Security	Oil bath torque limiter at the end of the rotor
Transport dimension w x L x H (mm)	2470 mm x 2120 mm x 1340 mm (97'' 1/4 x 83'' 1/2 x 52'' 3/4)
<b>Option</b>	- Cast iron grooved disc roller + Scraper

# **RX 250-L3** ROTADAIRON®



**Option : Cast iron grooved disc roller  
+ Scraper**



**Option : Anti-groove system (ARS)**

# STONE BURIERS FOR TRACTORS

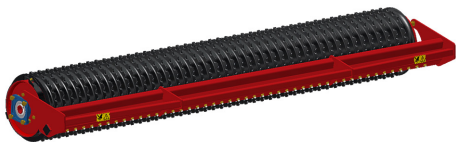
This soil preparer and stone burier allows the building or renovation of green spaces by preparing the seed bed before seeding. The machine is multi-purpose, it allows tilling, burying (stones, rubbish, herbs, etc.), levelling, mixing and rolling the surface. The use is done live or on a ground previously decompacted in depth.

Its particularity is that its transport width is 3 meters (118" 1/8).

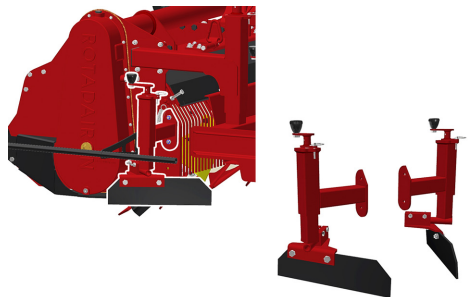
## Technical details :

Machine	RX 250-L3
Working width	2500 mm (98" 1/2)
Total width	2965 mm (116" 3/4)
Weight with mesh metal roller	1935 Kg (4263,7 lb)
Tractor : Required power	110 - 150 CV
Tractor : Max track width	2.45 meters (96" 1/2)
Working depth (max)	220 mm (8" 1/2)
Rotor outer diameter	630 mm (24" 3/4)
Depth adjustment	Support on rear roller adjustable by screw jacks
Number of blades	72
Grid finger spacing	20 mm (4/5")
3 point hitch	Categories 2 & 3
PTO speed	1000 tr/min
Tractor forward speed	0,8 to 1,5 km/h (0.5 to 0.9 mph)
Transmission	Angle gearbox + Oil bath chains
Machine drive type	Dual drive
Security	Torque limiter in oil bath at each end of the rotor
Transport dimension w x L x H	2965 mm x 2200 mm x 1290 mm (116" 3/4 x 83" 1/2 x 52" 3/4)
Weight with cast iron notched disc roller	-
<b>Options</b>	<ul style="list-style-type: none"> <li>- Cast iron grooved disc roller + Scraper</li> <li>- Tire roller</li> <li>- Anti-groove system (ARS)</li> </ul>

# **RX 250/300/370** ROTADAIRON®



**Option : Cast iron grooved disc roller  
+ Scraper**



**Option : Anti-groove system (ARS)**

# STONE BURIERS FOR TRACTORS

These soils preparer and stone buriers are designed for tractors. It allows the building or renovation of green spaces by preparing the seed bed before seeding. The machine is multi-purpose, it allows tilling, burying (stones, rubbish, herbs, etc.), levelling, mixing and rolling the surface. The use is done live or on a ground previously decompacted in depth.

## Technical details :

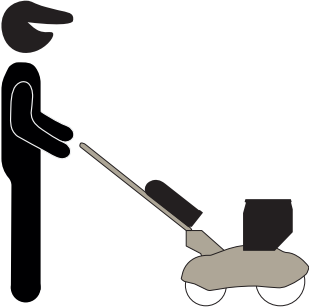
Machines	RX 250	RX 300	RX 370
Working width	2500 mm (98" 1/2)	3050 mm (120")	3680 mm (145")
Total width	3370 mm (132" 1/2)	3870 mm (152" 1/4)	4620 mm (182")
Weight with mesh metal roller	1934 Kg (4263.7 lb)	2192 Kg (4832.5 lb)	2499 Kg (5509.3 lb)
Tractor : Required power	110 - 150 CV	110 - 160 CV	130 - 180 CV
Tractor : Max track width	2.45 meters (96" 1/2)	3 meters (118" 1/10)	3.60 meters (141" 3/4)
Working depth (max)	220 mm (8" 1/2)		
Rotor outer diameter	630 mm (24" 3/4)		
Depth adjustment	Support on rear roller adjustable by screw jacks		
Number of blades	72	90	108
Grid finger spacing	20 mm (4/5")		
3 point hitch	Categories 2 & 3		
PTO speed	1000 tr/min		
Tractor forward speed	0,8 to 1,5 km/h (0.5 to 0.9 mph)		
Transmission	Angle gearbox + Oil bath chains		
Machine drive type	Dual drive		
Security	Torque limiter in oil bath at each end of the rotor		
Transport dimension w x L x H	3370mm x 2360mm x 1290mm (132" 1/2 x 93" x 50" 3/4)	3870mm x 2220mm x 1290mm (152" 1/4 x 87" 1/2 x 50" 3/4)	4620mm x 1980mm x 1295mm (182" x 78" x 51")
Weight with cast iron notched disc roller	2280 Kg (5036.5 lb)	2588 Kg (5705.5 lb)	2978 Kg (6565.3 lb)
Weight with tire roller	2138 Kg (4713.4 lb)	2431 Kg (5359.4 lb)	2779 Kg (6126.6 lb)

## Options

- Tire roller
- Cast iron grooved disc roller + Scraper
- Anti-groove system (ARS)



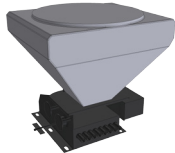
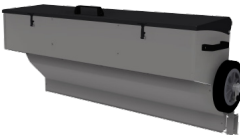
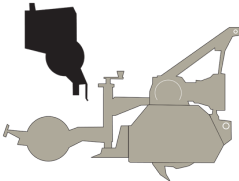
# SEEDING



P. 46



P. 54



P. 58

# SEED CAR ROTADAIRON®



Option : Seed dibbler



Option : Additional masses  
14 Kg (30.8 lb)

# MANUAL SEEDING MACHINE

The Rotadairon® SEEDCAR is a manual seeding machine designed for seeding all types of grass (bluegrass, red fescue or ray-grass). This gravity seeder is equipped with a graduated sector flow adjustment. For working comfort, the opening/ closing of the seeding is done from the handlebars. It also makes it possible to gear up and roll up all the «corners» of narrow or difficult access grounds.

The metal mesh roller, at the front, wafts the soil. Then the seed drill deposits the seeds. Finally the smooth rear roller, ideally compacts the soil to obtain a good germination and avoid the marking of the steps of the user.

## Technical details :

Machine	SEEDCAR
Seeding width	700 mm (27" 1/2)
Total width	840 mm (33")
Front roller type	Metal mesh
Front roller diameter	Ø 220 mm (8" 1/2)
Rear roller type	Stainless steel smooth
Rear roller diameter	Ø 200 mm (7" 3/4)
Weight	51 Kg (112.4 lb)
Transport dimension w x L x H (mm)	860 mm x 780 mm x 1085 mm (33" 7/8 x 30" 3/4 x 42" 3/4)
<b>Seeder</b>	
Type of seed drill	Stainless steel gravity seed drill
Seed rate adjustment	Adjustment dial 0 to 6
Seed rate calibration	Calibration bucket
Seed drill capacity	55 liters (14,5 US gal)
<b>Option</b>	- Seed dibbler - Additional masses 14 Kg (30.8 lb)

# e .SEED CAR + ROTADAIRON®



Handlebar in seeding position,  
tiltable to overseeding position



Seed dibbler

# ELECTRIC ASSISTED SEEDER

The Rotadairon® e.SEEDCAR 750w is an electric assisted seeder which will allow you to comfortably turf your land and preserve the environment.

The machine is fitted with a quiet electric motor and its battery has an autonomy of 60-90 min, allowing for about 2500 m<sup>2</sup> per cycle.

- For sowing on prepared soil: The mesh roller at the front embosses the soil. The seed drill then deposits the seeds. Finally, the rear roller smooths and compacts the soil to ensure good germination and prevent the user's footsteps from leaving marks.

- For overseeding: By tilting the handlebar of the e seedcar +, you can overseed after the necessary preliminary steps (short mowing, intense dethatching/scarification).

After sowing, a supply of amendment should be applied, followed by a pass with a smooth roller to ensure good germination.

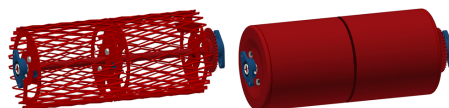
## Technical details :

Machine	e.SEEDCAR +
Seeding width	700 mm (27" 1/2)
Autonomy	60 - 90 minutes (≈ 2500 m <sup>2</sup> )
Lithium battery	36 V / 11.6 Ah Supplied with charger 230 V (E/F plug) Full charging time : 3h30
Total width	840 mm (33")
Front roller type	Metal mesh
Front roller diameter	Ø 220 mm (8" 1/2)
Rear roller type	Stainless steel smooth
Rear roller diameter	Ø 200 mm (7" 3/4)
Weight	72 Kg (163 lb)
Transport dimension w x L x H (mm)	860 mm x 850 mm x 1085 mm (33" 7/8 x 33" 1/2 x 42" 3/4)
<b>Seeder</b>	
Type of seed drill	Stainless steel gravity seed drill
Seed rate adjustment	Adjustment dial 0 to 6
Seed rate calibration	Calibration bucket
Seed drill capacity	55 liters (14,5 US gal)
<b>Option</b>	- Extra battery

# SD 700 ROTADAIRON®



Calibration drawer



Option : Double rear mesh roller or  
Double rear smooth roller

# SELF-PROPELLED SEEDING MACHINE

The Rotadairon® SD 700 is a self-propelled seeding machine designed for precision seeding, seed burial and field filling.

The Rotadairon® SD 700 can be used to sow the majority of grass varieties such as bluegrass, red fescue, ray grass, etc...

Reliable, handy and efficient, it allows you to sow quickly and effortlessly.

The metal mesh roller, at the front, wafts the soil. Then the seed drill deposits the seeds. Then the rotor claws the soil. Finally the smooth roller at the back compacts the soil ideally to obtain a good germination and avoid the marking of the steps of the user.

The Rotadairon® SD 700 is driven by the rear packer roller.

## Technical details :

Machine	SD 700
Seeding width	700 mm (27" 1/2)
Total width	860 mm (33" 3/4)
Front roller type	Metal mesh
Front roller diameter	Ø 330 mm (13")
Rear roller type	Smooth
Rear roller diameter	Ø 330 mm (13")
Weight	232 Kg (512 lb)
Transport dimension w x L x H (mm)	860 mm x 1200 mm x 1310 mm (33" 7/8 x 47" 1/4 x 51" 5/8)

### Motorization

Engine type	Honda thermal gas engine 4.5 HP
Engine air cleaner	Oil bath air cleaner
Transmission	4 forward speeds, 1 reverse

### Seeder

Type of seed drill	Stainless steel gravity seed drill
Seed rate adjustment	Adjustment dial 0 to 6
Seed rate calibration	Calibration bucket
Seed drill capacity	55 liters (14,5 US gal)

### Options

- Double rear mesh roller
- Double rear smooth roller



Calibration bucket



Available in E version (electric)

# SELF-PROPELLED SEEDING MACHINE

The Rotadairon® SD 700 Smart Seeder is a self-propelled seeding machine designed for precision seeding, seed burial and field filling.

The SD 700 SMART SEEDER is an evolution of the SD 700. It features the proven design and components of ROTADAIRON turf seeders, with a reduced weight for even greater manoeuvrability.

The Rotadairon® SD 700 Smart Seeder can be used to sow the majority of grass varieties such as bluegrass, red fescue, ray grass, etc...

Reliable, handy and efficient, it allows you to sow quickly and effortlessly.

The metal mesh roller, at the front, wafts the soil. Then the seed drill deposits the seeds. Then the roller claws the soil. Finally the smooth roller at the back compacts the soil ideally to obtain a good germination and avoid the marking of the steps of the user.

The Rotadairon® SD 700 is driven by the rear packer roller.

The machine is available in a petrol or electric version (SD 700 E).

## Technical details :

Machine	SD 700	SD 700 E
Seeding width	700 mm (27" 1/2)	
Total width	840 mm (33" 3/4)	
Front roller type	Metal mesh	
Front roller diameter	Ø 330 mm (13")	
Rear roller type	Smooth	
Rear roller diameter	Ø 330 mm (13")	
Weight	162 kg (357 lb) with possible ballast (+ 20 kg max)	
Transport dimension w x L x H (mm)	840 mm x 1200 mm x 1310 mm (33" 3/32 x 47" 1/4 x 51" 5/8)	

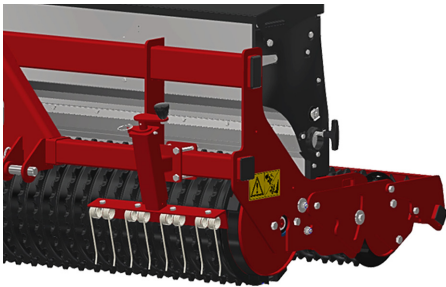
## Motorisation

Engine type	Honda gas engine 4.5 HP	Electrical motor EGO 2700 W
Engine air cleaner	Oil bath air cleaner	/
Transmission	4 forward speeds, 1 reverse	

## Seeder

Type of seed drill	Stainless steel gravity seed drill
Seed rate adjustment	Adjustment dial 0 to 6
Seed rate calibration	Calibration bucket
Seed drill capacity	55 liters (14,5 US gal)

# **SME** 155/205 ROTADAIRON®



**Wheel Eraser Claws**



**Stainless steel gravity seeder**

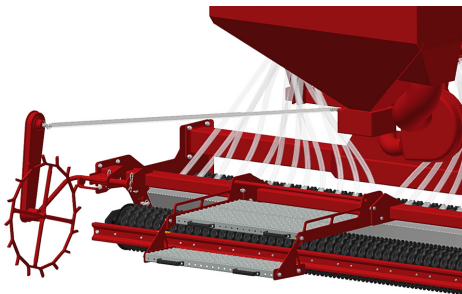
# SEEDING MACHINE FOR TRACTORS

These seeding machines have been designed to sow most varieties of grass such as pastures, red fescue, ray-grass, etc. on large areas. It is equipped with a gravity seed drill and two cast iron rollers, allowing a single clutch passage. It is used on the ground previously worked with the aid of a soil preparer/stone burier.

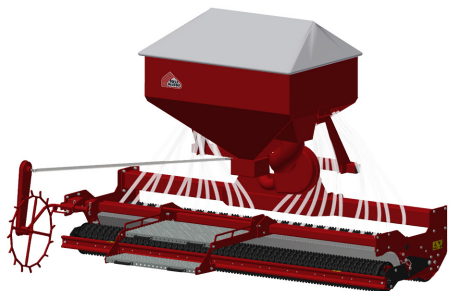
## Technical details :

Machines	SMG 155	SMG 205
Seeding width	1500 mm (59")	2000 mm (78" <sup>3</sup> / <sub>4</sub> )
Total width	1800 mm (70" <sup>3</sup> / <sub>4</sub> )	2245 mm (88" <sup>1</sup> / <sub>2</sub> )
Weight	575 Kg (1267.6 lb)	712 Kg (1569.6 lb)
Tractor : Required power	30 - 60 CV	50 - 95 CV
Front roller type	Cast iron serrated disc roller	
Front roller diameter	Ø 400 mm (15" <sup>3</sup> / <sub>4</sub> )	
Rear roller type	Cast iron serrated disc roller	
Rear roller diameter	Ø 295 mm (11" <sup>1</sup> / <sub>2</sub> )	
3 point hitch	Categories 1 & 2	
Tractor forward speed	3 to 5 Km/h (1,8 to 3,1 mph)	
Transport dimension w x L x H	1800 mm x 1150 mm x 910 mm (70" <sup>3</sup> / <sub>4</sub> x 45" <sup>1</sup> / <sub>4</sub> x 35" <sup>3</sup> / <sub>4</sub> )	2245 mm x 1150 mm x 910 mm (88" <sup>1</sup> / <sub>2</sub> x 45" <sup>1</sup> / <sub>4</sub> x 35" <sup>3</sup> / <sub>4</sub> )
<b>Seeder</b>		
Type of seed drill	Stainless steel gravity seeder	
Seed rate adjustment	Adjustment clock 0 to 12 o'clock	
Seed drill capacity	139 liters (37 US gal)	178 liters (47 US gal)
<b>Option</b>	Double rear mesh roller	

# **SMA 305** ROTADAIRON®



**Access platform for the tank**



**Pneumatic seeder**

# PNEUMATIC SEEDER FOR TRACTOR

This seeder has been designed to seed most varieties of turf such as pastures, fescues, ryegrass, etc. on large surfaces. It is equipped with a pneumatic seeder and two cast iron rollers, allowing seeding in one pass. It is used on land previously worked with a soil preparation/stone burier.

## Technical details :

<b>Machine</b>	<b>SMA 305</b>
Seeding width	3310 mm (130'' 1/4)
Total width	3600 mm (141'' 3/4)
Weight	1640 Kg (3615,5 lb)
Tractor : Required power	60 - 100 CV
Front roller type	Cast iron serrated disc roller
Front roller diameter	Ø 400 mm (15'' 3/4)
Rear roller type	Cast iron serrated disc roller
Rear roller diameter	Ø 295 mm (11'' 1/2)
3 point hitch	Categorie 2
Tractor forward speed	3 to 8 Km/h (1,8 to 5 mph)
Transport dimension w x L x H	3600 x 2420 x 2340 (141'' 3/4 x 95'' 1/4 x 92'')
<b>Seeder</b>	
Type of seed drill	Pneumatic seed drill
Seed rate ajustement	Dosing ruler
Seed drill capacity	750 liters (198 US gal)
<b>Option</b>	Available in double rear cast iron rollers

# SE/SCV ROTADAIRON®

## SG Seeder



STH 36 with SG 90 seeder



Stainless steel tank bottom seed decompaction mixer

## SCV Seeder



SCV on soil preparer RD 130



Seed flow adjustment via the graduated dial

# OPTION - GRASS SEEDER

Stainless steel gravity seed drills (SG) and Ventilated spline-slit seeder (SCV) are designed to be paired with soil cultivators. They allow you to sow immediately after soil preparation. This means you can bury stones, prepare the soil and sow in a single pass. A real time saver! The tables below show the compatibility of SG and SCV seed drills with ROTADAIRON soil cultivators.

## Technical details :

Machines	SG 90	SG 100
Mounting on machine type	STONY 90 STH 36	STONY 115 STH 42
Seeding width	900 mm (35")	1000 mm (39" 3/8)
Total width	1210 mm (47" 5/8)	1340 mm (52" 3/4)
Seed rate adjustment	Graduated dial	
Seed drill capacity	75 liters(20 US gal)	80 liters (21 US gal)
Weight	35 Kg (77.2 lb)	40 Kg (88.2 lb)
Transport dimension w x L x H	1210mm x 620mm x 420mm (47"5/8x 24"2/5 x 16" 1/2)	1340mm x 620mm x 420mm (52"3/4 x 24"2/5 x 16" 1/2)

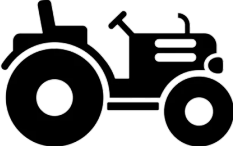
## Technical details :

Machines	SCV 100	SCV 130	SCV 145	SCV 150	SCV 180	SCV 200	SCV 250
Mounting on machine type	RD 100	RD 130	RD 145	RDL 150	RDL 180	RDL 200	RDL 250
Seeding width	1000 mm (39" 3/8)	1300 mm (51" 1/4)	1450 mm (57" 1/8)	1500 mm (59" 1/8)	1800 mm (70" 7/8)	2000 mm (78" 3/4)	2500 mm (98" 7/16)
Seed rate adjustment	Graduated dial						
Number of seed tubes	6			8		12	
Seed drill capacity	80 liters (21 US gal)			120 liters (32 US gal)			300 liters (79 US gal)
Weight	55 kg (121 lbs)			55 kg (121 lbs)			70 kg (154 lbs)
Transport dimension w x L x H	620 mm x 660 mm x 700 mm (24"3/8x 26" x 27" 5/8)	620 mm x 660 mm x 700 mm (24"3/8x 26" x 27" 5/8)	620 mm x 660 mm x 700 mm (24"3/8x 26" x 27" 5/8)	620 mm x 660 mm x 800mm (24"3/8x 26" x 31")	620 mm x 660 mm x 800mm (24"3/8x 26" x 31")	620 mm x 660 mm x 800mm (24"3/8x 26" x 31")	900 mm x 700 mm x 900mm (35"1/2 x 27" 5/8 x 35"1/2)

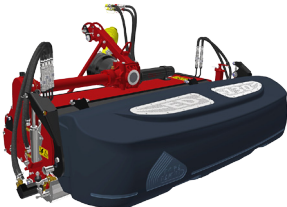


# DETHACHING - SPIKING

---

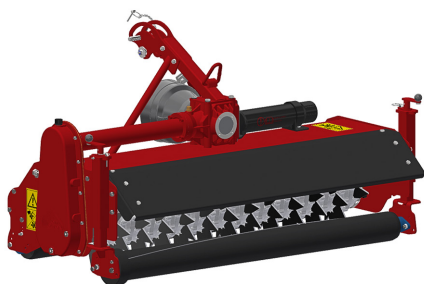


P. 62

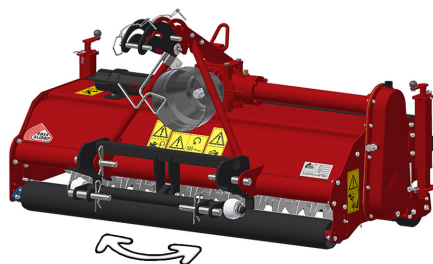


P.64

# DS 130/180 ROTADAIRON®



Option n°1 : Rear roller



Option n°2 : « SWING »  
(Option 1 required)

# DETHATCHERS FOR TRACTOR

The DS Dethatchers Spikers are the evolution of our proven “ED” models well known for their superior dethatching qualities with their unique blade fixing system, accepting 3 variants of knives to precisely meet your needs.

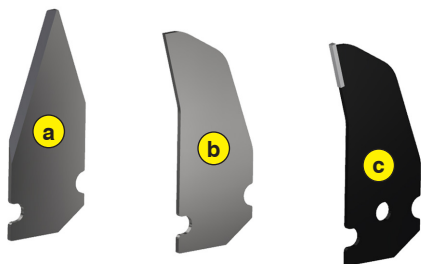
These dethatching machines allow to perform dethatching or scarifying operations at the desired depth (from 0 to 60 mm). In addition to these operations, the machines allow to carry out an aeration of the ground (spiking effect, without power take-off) or a rolling. The machines are equipped with a quick-change blade system (Rotadairon® patent). The blades are positioned magnetically on their support. All the supports are locked by a single nut at the end of the rotor axis.

3 knife configurations are available (See ED 130 TS)

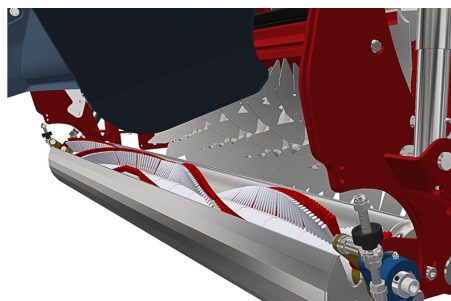
## Technical details :

Machines	DS 130	DS 180
Working width	1300 mm (51" 1/4)	1800 mm (70" 3/4)
Total width	1560 mm (61" 1/2)	1945 mm (76" 2/3)
Weight	288 Kg (635 lb) With option n°1 : 316 Kg (697 lb) With option n°1 & 2 : 340 Kg (750 lb)	330 Kg (728 lb) With option n°1 : 365 Kg (805 lb) With option n°1 & 2 : 389 Kg (858 lb)
Tractor : Required power	25 - 45 CV	30 - 45 CV
Working depth	0 to 60 mm (0" to 2" 1/4)	
Distance between knives	24 mm (15/16")	
Rotor outer diameter	360 mm (14" 1/4)	
Depth adjustment	Basic machine: Adjustment at the 3rd Points Machine with options: Height adjustable rollers	
Number of flanges	53	74
Number of knives	159	222
3 point hitch	Categories 1 & 2	
PTO speed	540 tr/min	
Tractor forward speed	3 to 8 Km/h (1,8 to 4,9 mph)	
Transmission	Angle gearbox + Oil bath chain	
Transport dimension w x L x H	1560 mm x 895 mm x 840 mm (61" 1/2 x 35" 1/4 x 33")	1945 mm x 895 mm x 840 mm (76" 2/3 x 35" 1/4 x 33")
<b>Options</b>	Option n°1 : Rear roller Option n°2 : « SWING »	

# ED 130 TS ROTADAIRON®



3 knife configurations



Hydraulic system (Motor) for perfect felt collection

# DETHATCHER - COLLECTOR FOR TRACTOR

This dethatching / collecting machine allows to carry out the dethatching operations of a green in one pass. The machine has a patented sweeping system with hydraulic drive. The hydraulically discharged collection container, with a capacity of 180 liters, allows for the clearing of a whole green. In addition to these operations, the machine can also be used to aerate the ground (spiking effect, without power take-off) or to roll. The machine is equipped with a quick-change blade system (Rotadairon® patent). The blades are positioned magnetically on their support. All the supports are locked by a single nut at the end of the rotor axis.

3 knife configurations :

- **a** Sharpened (standard): Stainless steel knife sharpened for classic de-thatching
- **b** Not sharpened: Made of stainless steel knives not sharpened for more aggressive de-thatching
- **c** Carbide plate: Carbon steel with carbide plate for very aggressive de-thatching

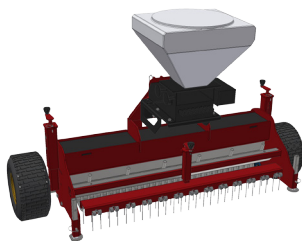
## Technical details :

Machine	ED 130 TS
Working width	1300 mm (51" 1/4)
Total width	1840 mm (72" 1/2)
Weight	366 Kg (806.8 lb)
Tractor : Required power	25 - 45 CV
Working depth	0 to 60 mm (0" to 2" 1/4)
Distance between knives	24 mm (15/16")
Rotor outer diameter	360 mm (14" 1/4)
Depth adjustment	Front roller support with 2 marked positions + Rear roller support adjustable by screw jack
Number of flanges	53
Number of knives	159
3 point hitch	Categories 1 & 2
PTO speed	540 tr/min
Tractor forward speed	3 to 8 Km/h (1,8 to 4,9 mph)
Transmission	Angle gearbox + Oil bath chain
Transport dimension w x L x H	1840 mm x 1420 mm x 840 mm (72" 1/2 x 56" x 33")



# OVERSEEDING

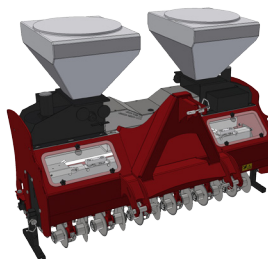
---



P. 68



P. 70



P. 72

# **CLEARMAX 145** ROTADAIRON®



**Sharp discs for stress action on weeds**



**Dethatching teeth**

# MULTIFUNCTION TURF REGENERATION TOOL

The Clearmax is a multifunctional tool designed for all stages of turf regeneration without chemical inputs. Its modular design allows each function to be adapted according to the season and turf requirements.

Its disc system provides precise soil cultivation: weed stress, linear aeration and light decompaction to promote healthy turf. It weakens weeds that are not treated by the superficial work of the harrows. The adjustable tine dethatching device removes dead organic matter and straightens the grass blades. During the overseeding phase, the tines improve seed penetration and sowing uniformity.

The spline-slit seeder, with flow proportional to forward speed and adjustable from the cab, ensures uniform seed distribution thanks to an efficient pneumatic system.

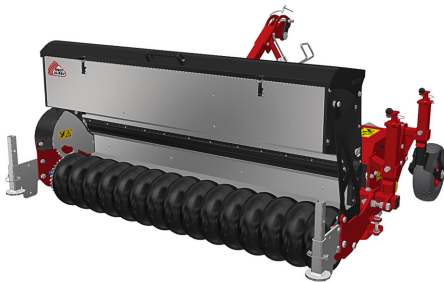
Finally, the rear roller firms the seedbed.

Thanks to its versatile design, the CLEARMAX ensures a lasting improvement in lawn density and quality.

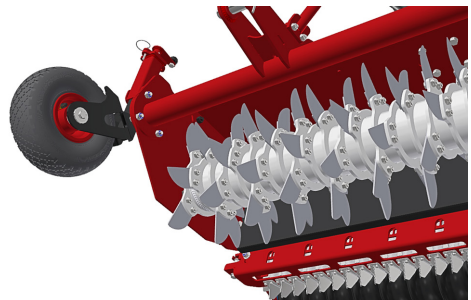
## Technical details :

Machines	Clearmax
Working width	1450 mm (57" 1/16)
Total width	2250 mm (88" 9/16)
Weight	520 kg (1147 lb)
Tractor : Required power	18 - 25 CV (18 -25 HP)
Working depth (max)	0 to 60 mm (0" to 2" 1/4)
Interval between sowing	47.5 mm (1" 7/8)
Rotor outer diameter	225 mm (8" 7/8)
Number of discs	32
Depth adjustment	Screw jacks
3 point hitch	Categories 1 & 2
Tractor forward speed	7 Km/h to 13 km/h (4.3 to 8 mph)
Transport dimension w x L x H	2250 mm x 1420 mm x 750 mm (88" 9/16 x 55" 7/8 x 28" 3/8)
Seeder	
Type of seed drill	Ventilated spline-slit seeder (SCV)
Seed rate adjustment	Potentiometer + proportional advance flow (DPA)
Seed drill capacity	80 liters (21 US gal)

# RG 140/200 ROTADAIRON®



Special tire roller



Clean cut by sharp discs

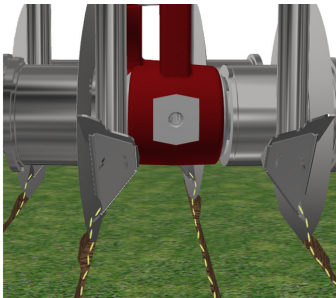
# KNIFE OVERSEEDING MACHINE

These overseeding machines allow you to perform your over-seeding operations in an economical way. The rotating knives create a groove in which the pods deposit the seeds. The machine allows a high precision seeding which is obtained by volumetric adjustment of all the cells constituting the rotor of the seed drill. The furrows are closed, naturally, by the elasticity of the grass but also by the passage of the roller with special tires. The cleaning of the tank is simplified thanks to the tool-free extraction of the agitator.

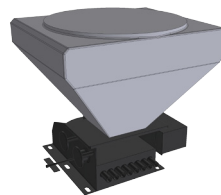
## Technical details :

Machines	RG 140	RG 200
Working width	1400 mm (55'' <sup>1</sup> / <sub>8</sub> )	1830 mm (72'')
Total width	1790 mm (70'' <sup>1</sup> / <sub>2</sub> )	2270 mm (89'' <sup>1</sup> / <sub>4</sub> )
Weight	485 Kg (1069.2 lb)	580 Kg (1278.6 lb)
Tractor : Required power	18 - 25 CV	25 - 60 CV
Working depth (max)	0 to 60 mm (0'' to 2'' <sup>1</sup> / <sub>4</sub> )	
Interval between sowing	48 mm (1'' <sup>7</sup> / <sub>8</sub> )	
Rotor outer diameter	400 mm (15'' <sup>3</sup> / <sub>4</sub> )	
Number of knives	90	117
Depth adjustment	Screw jack system	
3 point hitch	Categories 1 & 2	
PTO speed	540 tr/min	
Tractor forward speed	0,8 to 1,5 Km/h (0.5 to 0.9 mph)	
Transmission	Angle gearbox + Oil bath chain	
Transport dimension w x L x H	1790 mm x 1430 mm x 930 mm (70'' <sup>1</sup> / <sub>2</sub> x 56'' <sup>1</sup> / <sub>4</sub> x 36'' <sup>1</sup> / <sub>2</sub> )	2270 mm x 1500 mm x 930 mm (89'' <sup>1</sup> / <sub>4</sub> x 59'' x 36'' <sup>1</sup> / <sub>2</sub> )
<b>Seeder</b>		
Type of seed drill	Stainless steel seed drill by spline distributor	
Seed rate adjustment	Adjustment clock 0 to 12 o'clock	
Seed drill capacity	130 liters (34 US gal)	178 liters (47 US gal)

# ROOGE 150.60 ROTADAIRON®



Clean cut by sharp discs



Ventilated spline-slit seeder

# DISC OVERSEEDING MACHINE

This overseeding machine allows you to perform your over-seeding operations optimally. Each disc/injector unit produces a clean cut and precise deposit of seeds. This unique design allows us to offer you a compact machine with a limited weight allowing the selection of a tractor with less lifting capacity.

The cutting of the groove is carried out by sharp discs, arranged on independent blocks that follow the profile of the ground. The injectors place the seeds precisely in the furrows.

Precision seeding of classic mixtures, such as English ryegrass and fescues, is achieved with ventilated spline-slit seeders. The machine features two seed boxes, allowing different grasses to be sown on the front and rear discs

The rear roller then closes the grooves.

## Technical details :

Machines	ROOG 150.60
Working width	1500 mm (59")
Total width	1760 mm (69" 1/4)
Weight	600 Kg (1433 lb)
Tractor : Required power	From 30 CV (Check the lifting capacity of the tractor)
Seeding depth	0 to 20 mm (0" to 3/4")
Interval between sowing	60 mm (2" 1/4)
Number of discs	24
Depth adjustment	3rd point + roller
3 point hitch	Categories 1 & 2
Transport dimension w x L x H (mm)	1760 mm x 1010 mm x 1490 mm (69" 1/4 x 58" 3/4 x 39" 3/4)
Seeder	
Type of seed drill	Ventilated spline-slit seeder (SCV) with DPA
Seed rate adjustment	Adjustment clock 0 to 12 o'clock
Seed rate calibration	From 2 to 30 g/m <sup>2</sup>
Seed drill capacity	160 liters (42 US gal)

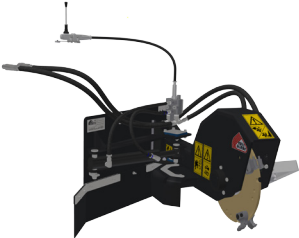


# MULCHING

---

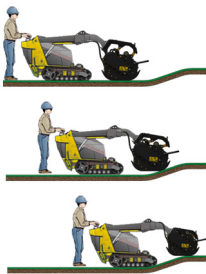


P. 76



P.78

# BRD 50 ROTADAIRON®



Floating field following system



Y-shaped mounting of knives on shackles

# MULCHER FOR SKID-STEERS

This mulcher was designed to grind dense herbs and brambles. It achieves a very high performance thanks to the floating system (Rotadairon® Patent) which allows to follow perfectly and automatically the unevenness of the ground.

It is equipped with a device that complies with the regulations in force (EN12733) allowing the machine to be stopped quickly: as soon as the operator releases the controls and the machine ceases to be supplied with oil, our system brakes and stops the rotor in less than 7 seconds.

The Y-mounting of knives on shackles contributes to a better grinding.

## Technical details :

Machines	BRD 50	BRD 50 E (*)	BRD 50 B
Hitch plate	Conventional quick coupler system Toro / Ditch-witch / Vermeer		Quick coupler system Bobcat MT
Working width	1270 mm (50")		
Total width	1440 mm (56" 3/4)		
Weight	276 kg (608 lb)		310 kg (683 lb)
Carrier : Hydraulic flow	40 to 60 l/min (10,5 to 15,8 US gpm)	40 to 55 l/min (10,5 to 14,5 US gpm)	40 to 60 l/min (10,5 to 15,8 US gpm)
Carrier : Pressure	210 bars (3045 psi)	200 bars (2900 psi)	210 bars (3045 psi)
Carrier : Maximum track width	1.27 meters (50")		
Working height	30 to 70 mm (1" 1/4 to 2" 3/4)		
Rotor outer diameter	366 mm (14" 3/8)		
Depth adjustment	Adjustable skids 3 positions		
Number of knives	76		
Number of shackles	38		
Forward speed of the carrier	0.8 to 1,5 Km/h (0.5 to 0.9 mph)		
Hydraulic control block (**)	Yes	No	Yes
Transmission	Hydraulic motor + Chain in oil bath		
Security	Hydraulic control block	Made by the carrier	Hydraulic control block
Transport dimension w x L x H	1440 mm x 950 mm x 690 mm (56"3/4 x 37"1/2 x 27"1/4)		

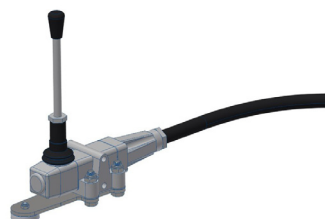
(\*) : This model is to be fitted with these specific Mini Skids : Toro TX 1000 and TX 1300 - Ditch Witch from SK 755 to 1550. Another brand/model, please contact us.

(\*\*) : Necessary for hydraulic carrier to comply standards.

# RS 480 ROTADAIRON®



**Sweeping speed control**



**Remote control with  
magnetic base**

# STUMP GRINDER FOR SKID-STEERS

This machine is designed to be mounted on a skid-steer. It is designed for trimming, planing and crushing stumps. It is equipped with a unique control system which allows you to control the sweeping speed to suit the essences of stumps to be treated.

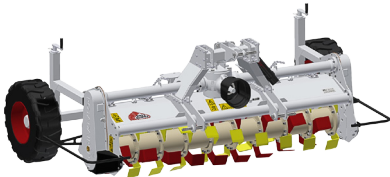
## Technical details :

Machine	RS 480
Hitch plate	Toro / Ditch-witch / Vermeer
Sweep amplitude	1110 mm (43'' 5/7)
Weight	160 kg (352.7 lb)
Carrier : Hydraulic flow	30 to 65 l/min (9,2 to 17,1 US gpm)
Carrier: Pressure (max)	230 bars (3335 psi)
Trimmer rotor diameter with teeth	480 mm (18'' 7/8)
Number of teeth	4 pairs (Optional : 8 pairs)
Tooth type	Carbide teeth
Sweep control	Proportional control
Forward speed	0.8 to 1,5 Km/h (0.5 to 0.9 mph)
Rotor drive	Live motor
Transport dimension w x L x H	1080 mm x 1010 mm x 700 mm (42''1/2 x 39''4/5 x 27''4/7)

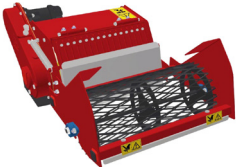
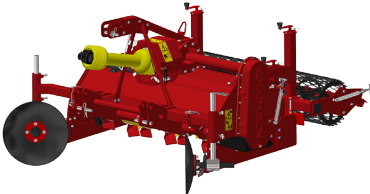


# SPECIAL APPLICATIONS

---

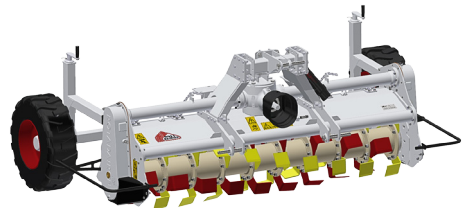
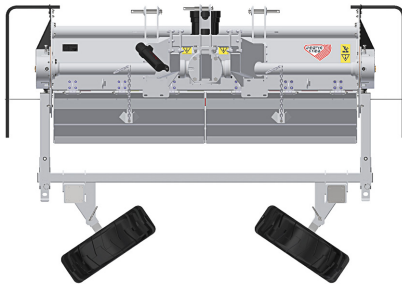


P. 82



P. 84

# DCE 250/300 ROTADAIRON®



Option DCE 250 : Retractable wheels  
for road transport

# ROTARY TILLERS FOR TRACTORS

The Rotadairon® DCE 250/300 are designed for agriculture applications. Their oversized rotor with double drive is designed to fight against the effect of battance, formed under the action of intense rain and trampling.

Equipped with oversized tiller with double drive, the DCE 250/300 are specially designed for applications in difficult soils.

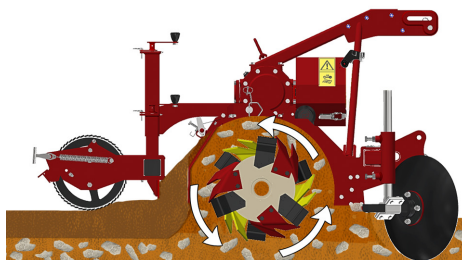
## Technical details :

Machines	DCE 250	DCE 300
Working width	2500 mm (98'' 1/2)	3050 mm (120'')
Total width	3365 mm (132'' 1/2)	3920 mm (154'' 1/4)
Weight	1370 Kg (3020.3 lb)	1470 Kg (3240.7 lb)
Tractor : Required power	90 - 110 CV	110 - 150 CV
Tractor : Max track width	2.5 meters (98'' 1/2)	3.05 meters (120'')
Working depth (max)	200 mm (7'' 3/4)	
Rotor outer diameter	600 mm (23'' 1/2)	
Depth adjustment	Support on Rear tires adjustable by screw jacks	
Number of blades	54	66
3 point hitch	Categories 2 & 3	
PTO speed	1000 tr/min	
Tractor forward speed	0,8 to 1,5 km/h (0.5 to 0.9 mph)	
Transmission	Angle gearbox + Oil bath chains	
Machine drive type	Dual drive	
Security	Torque limiter in oil bath at each end of the rotor	
Transport dimension w x L x H	3365 mm x 1825 mm x 1275 mm (132'' 1/2 x 71'' 3/4 x 50'' 1/4)	3920 mm x 1825 mm x 1275 mm (154'' 1/4 x 71'' 3/4 x 50'' 1/4)
<b>Option</b>	DCE 250 : Retractable wheels for road transport	

# TR 130/150/170 ROTADAIRON®



Option : Front disk



Soil preparation principle

# SOIL PREPARER / STONE BURIER TERRAGRO

The TERRAGRO developed by ROTADAIRON in collaboration with the professionals of the horticultural and market gardening sector is a preparator-burier for seedbeds or plantations, in beds or in forms. The TERRAGRO works the soil surface and respects its agronomic structure. Its oversized rotor with reverse rotation throws stones, plant waste and soil against the selection grid, and, by densimetry, deposits the coarse elements which are then covered with fine soil.

The beds have, in all points, a perfect homogeneity of density which favors a more grouped germination of seeds and a faster recovery of the plants.

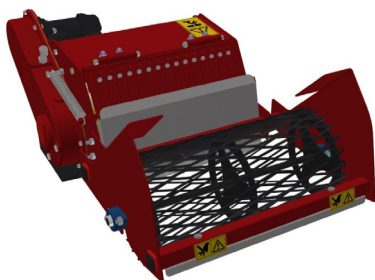
The TERRAGRO can thus work in all types of soil (sand, clay, silt, pebbles) while ensuring an ideal quality of preparation.

## Technical details :

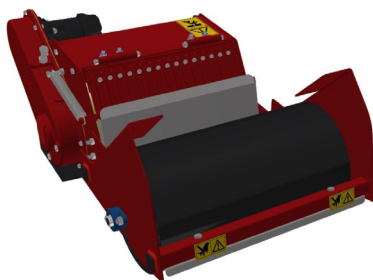
Machines	TR 130	TR 150	TR 170
Working width	1300 mm (51" 1/4)	1500 mm (59")	1770 mm (69" 2/3)
Total width	1680 mm (66" 1/6)	1880 mm (70" 4/5)	2100 mm (82" 2/3)
Weight	800 kg (1763 lb)	850 kg (1873 lb)	900 kg (1984 lb)
Tractor : Required power	35 to 60 CV	45 to 70 CV	50 to 95 CV
Tractor : Max track width	1.5 meters (59")	1.7 meters (66" 4/5)	1.9 meters (74" 2/3)
Working depth (max)	160 mm (6" 1/4)		
Rotor outer diameter	400 mm (15" 3/4)		
Depth adjustment	Support on rear roller adjustable by screw jacks		
Number of blades	42	48	54
Grid finger spacing	35 mm (1" 3/8)		
3 point hitch	Categories 1 & 2		
PTO speed	540 tr/min		
Tractor forward speed	0.8 to 1,5 Km/h (0.5 to 0.9 mph)		
Transmission	Angle gearbox + Oil bath chain		
Security	Torque limiter with dry friction and flywheel		
Transport dimension w x L x H	1700mm x 2100mm x 1200mm (66"4/5 x 82"2/3 x 47"1/4)	1900mm x 2100mm x 1200mm (74"2/3 x 82"2/3 x 47"1/4)	2100mm x 2100mm x 1200mm w(82"2/3 x 82"2/3 x 47"1/4)
Option	Front discs		

**For any specific request,  
Please contact your Rotadairon® dealer**

# **RV 50** ROTADAIRON®



Version : Mesh metal roller (MD)



Version : Smooth roller (ML)

# SOIL PREPARER / STONE BURIER

This soil preparer interface on multi-tool frame (ex : boisselet).It allows maintenance of inter-row vines.

The machine is multi-propose, it allows tilling, burying ( stones,rubbish, herbs,etc...), levelling, mixing and rolling the surface. It can be used directly or on a ground previously decompacted.

## Technical details :

Machines	RV 50 MD	RV 50 ML
Working width	500 mm (19" <sup>2</sup> / <sub>3</sub> )	
Total width	690 mm (27" <sup>1</sup> / <sub>6</sub> )	
Weight with mesh metal roller	120 Kg (264.5 lb)	-
Weight with smooth metal roller	-	136 Kg (299.8 lb)
Hydraulic flow	30 to 50 l/min (7.9 to 13.2 US gpm)	
Working depth (maxi)	140 mm (5" <sup>1</sup> / <sub>2</sub> )	
Pressure	180 bars (2610 psi)	
Rotor outer diameter	400 mm (15" <sup>3</sup> / <sub>4</sub> )	
Number of blades	8	
Grid finger spacing	20 mm (4/5")	
Forward speed of the carrier	0,8 to 1,5 km/h (0.5 to 0.9 mph)	
Required power	18-25 CV	
Rotor transmission	Hydraulic motor + Chain in oil bath	
Security	Made by the carrier	
Transport dimension (mm) w x L x H	690 mm x 1200 mm x 550 mm (27" <sup>1</sup> / <sub>6</sub> x 47" <sup>1</sup> / <sub>4</sub> x 21" <sup>2</sup> / <sub>3</sub> )	
<b>Option</b>	- Multi-tool frame interface	

# SPARE PARTS

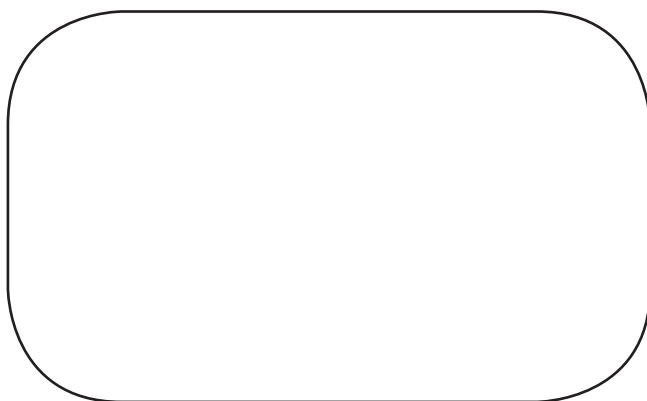
---



A large stock of spare parts is permanently maintained at our factory. Our partners have online tools and quick access to manufacturer information.

Maintain the quality and performance of your Rotadairon® by using only original parts.





[www.rotadairon.fr](http://www.rotadairon.fr)

Mail : [contact@rotadairon.fr](mailto:contact@rotadairon.fr)



**ROTADAIRON**

**Départementale 92 - Les Hunaudières**

**72230 MULSANNE - FRANCE**

**Phone number : (33) 2 43 422 422**